

This Week at St. Jude's

Daily Weekday Morning Prayer: 9:15-9:45 am in the sanctuary

Thursday, April 13, 2017

7:00 pm: Maundy Thursday services
7:00 pm-9:30 pm: private rental, East Room

Friday, April 14, 2017

Noon: Good Friday services
7:00 pm: Stations of the Cross services

Saturday, April 15, 2017

8:00 pm: Easter Vigil services

Sunday, April 16, 2017

8:00 am: Holy Eucharist
9:15 am: Parish Potluck Brunch
10:30 am: Holy Eucharist
12:30 pm—5:00 pm: Full Gospel Korean Church

Monday, April 17, 2017

10:00 am: Cupertino Choraliers, PH

Tuesday, April 18, 2017

3:45 pm-4:30 pm Fusion, PH
6:30 pm: Taizé prayer service
7:20 Vestry meeting

Wednesday, April 19, 2017

Noon Healing Eucharist followed by brown bag lunch, FSR, discussion

Thursday, April 20, 2017

10:00 am: parents support group, FHO
10:30 am: Covenant group, FSR
11:00 am: book discussion, FHO

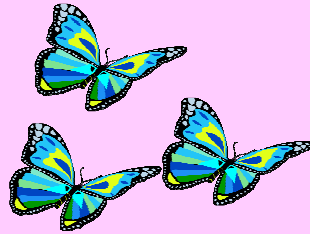
Friday, April 21, 2017

6:30 pm: Taizé prayer service

Saturday, April 22, 2017

Sunday, April 23, 2017

8:00 am: Holy Eucharist
10:30 am: Holy Eucharist
12:30 pm—5:00 pm: Full Gospel Korean Church



Legend:

W—West room off the Parish Hall FSR—Fireside room off the Parish Hall
FHO—Farmhouse office E—East room off the Parish Hall



Daytime Classroom Usage

Monday	Tuesday	Wednesday	Thursday	Friday	Saturday	Sunday
Live Oak Adult Day Services 9:00 am –3:00 pm rms. 2, 5, 6	Live Oak Adult Day Services 9:00 am –3:00 pm rms. 2, 5, 6	Live Oak Adult Day Services 9:00 am –3:00 pm rms. 2, 5, 6	Live Oak Adult Day Services 9:00 am –3:00 pm rms. 2, 5, 6	Live Oak Adult Day Services 9:00 am –3:00 pm rms. 2, 5, 6		Godly Play, 10:15 am—11:15 am rms. 1 & 6
Fusion After School 12:30 -6:30 rm. 1 2:30 -6:30 rm. 2 4:00-6:30 rm. 5 *late students in rm. 1	Fusion After School 12:30-6:30 rm. 1 2:00 –7:00 rm. 2 4:00 –6:30 rm. 5 *late students in rm. 1	Fusion After School 12:30-6:30 rm. 1 2:30-6:30 rm. 2 4:00 –7:00 rm. 5 *late students in rm. 1	Fusion After School 12:30-6:30 rm. 1 2:30-6:30 rm. 2 4:00–6:30 rm. 5 *late students in rm. 1	Fusion After School 12:30-6:30 rm. 1 2:30-6:30 rm. 2 4:00 –7:00 rm. 5 *late students in rm. 1		Full Gospel rm. 2, 12-4:00 pm rm. 5, 12-6:00 pm rm. 6, 2-4:00 pm



Evening/weekend Classroom Usage

Monday	Tuesday	Wednesday	Thursday	Friday	Saturday	Sunday
Boy Scouts 7 pm-9 pm, rm. 5			Food Addicts 7 pm– 8:30 pm, rm. 5	Full Gospel 7-9:00 pm, rm. 5, 8–8:30 pm, rm. 2		Godly Play, 10:15 am—11:15 am rms. 1 & 6
Food Addicts 7 pm-8:30 pm, rm. 2			guitar workshop 7 pm, rms. 1/2			